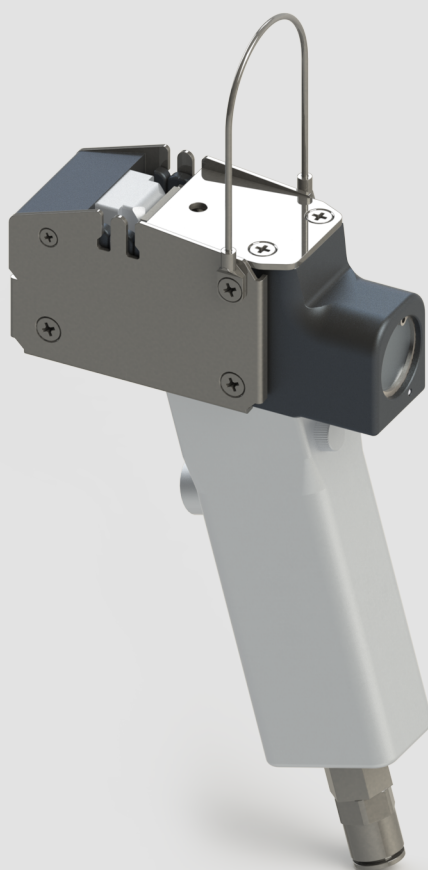




FACTSHEET

AirSplicer-17-2.

Yarn splicer



HEBERLEIN® AirSplicer-17-2.

High-strength knot-free joining of filament yarns

The AirSplicer-17-2 produces a splice with flat, neatly bound yarn ends and maximum strength. Part-oriented, synthetic filament yarns (POY) can also be spliced, as can fine viscose or nylon fine hosiery yarns, fine carbon and glass fibre yarns, or BCF yarns.



AirSplicer-17-2

Splicing of Multifilament Yarns

The yarn splicer interlaces the ends of two yarns using air pressure. The splice thus achieved is highly uniform and very strong. Unlike a knot, a splice produces fewer problems in subsequent processes, since there is less thickening.

Features and Benefits

- The automatic splice cycle guarantees stable, operator-independent quality
- Robust design and long life
- Smooth functioning even under extreme conditions
- Knot-free splicing from 20 to 2,500 dtex, and glass fibre rovings up to 4 00 tex
- Easy operation
The splicing time can be easily set
- Customer service
Machine for tensile test to optimise the splice connection available

HEBERLEIN® AirSplicer-17-2.

Technical Data

Performance values

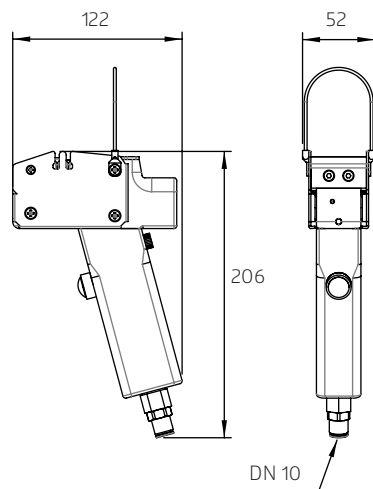
| Type ¹ | Synthetic fibres [dtex] | Cellulose fibres [dtex] | BCF yarns [dtex] | Glass fibres [tex] | Dyneema® [dtex] |
|--------------------|-------------------------|-------------------------|------------------|--------------------|-----------------|
| T-18 | 20 ... 150 | 40 ... 300 | | | ... 200 |
| T-20 | 50 ... 200 | | | | ... 400 |
| T-22 | 100 ... 450 | | | | ... 800 |
| T-18X ² | | | | | 20 ... 150 |
| T-20X ² | | | | | 50 ... 200 |
| T-22X ² | | | | | 100 ... 450 |
| G | 400 ... 900 | 400 ... 900 | ... 600 | ... 70 | |
| F | 900 ... 1800 | | ... 1000 | 70 ... 200 | |
| E | 1800 ... 2500 | | ... 1500 | 200 ... 400 | |
| C | | | ... 2500 | | |

¹ Blow chamber (splice jet insert)

² Specially designed for fine, high modulus yarns.

An optional splice connection requires a combination of the correct blow chamber, the ideal splicing duration, and the correct air pressure.
Good splice connections in yarns with a single count of 7 dpf or a yarn tension of 150 T/m are possible, but not guaranteed.

Dimensions and weight



Weight: 1,035 g

Accessories



Stands with foot activation switch

Compressed air requirements

- Overpressure: 4.0 ... 6.0 bar
- Max. residual oil: 0.1 mg/m³ (class 2*)
- Max. residual particles: (class 2*)
 - Particle size 1 µm
 - Particle density 1 mg/m³
- Max. residual water: (class 5*)
 - Residual water 7,732 g/m³
 - Pressure dew point + 7 °C

* Quality class according to DIN ISO 8573-1



Heberlein AG

Bleikenstrasse 11, 9630 Wattwil, Switzerland

T +41 71 987 44 44, F +41 71 987 44 45, info@heberlein.com, www.heberlein.com

Subject to change without prior notice.

