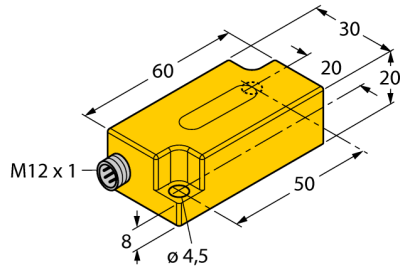


# Inclinometer

## B2N60H-Q20L60-2LU4-H1151

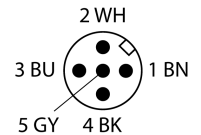
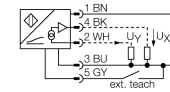
**TURCK**  
*works*

Industrial  
Automation



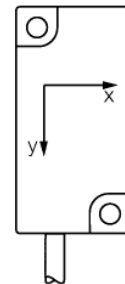
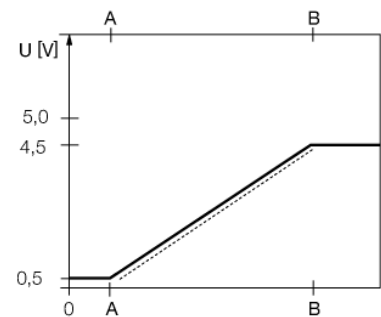
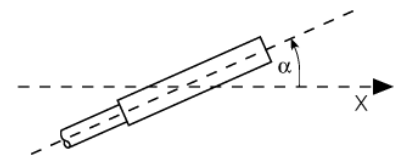
- Plastic, PC
- Zero point calibration +/- 15°
- Two analog outputs
- M12 x 1 male connector

### Wiring Diagram



### Functional principle

Inclination is determined by a wear-free semi-conducting sensor element.

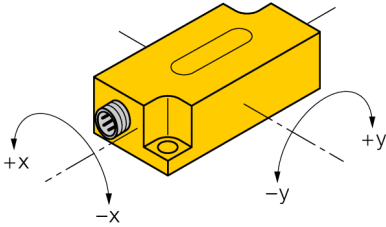


|   |   |
|---|---|
| <b>Type designation</b>                   | B2N60H-Q20L60-2LU4-H1151  |
| Ident-No.                                 | 1534036   |
| Ident-No (TUSA)                           | M1534036  |
| <b>Measuring range</b>                    | -60...60°   |
| Measuring range x-axis                    | -60...60°   |
| Measuring range y-axis                    | -60...60°   |
| Repeatability                             | ≤ 0.2 % of measuring range  A - B   |
| Linearity deviation                       | ≤ 0.5 %   |
| Temperature drift                         | ≤ ± 0.025 % / K   |
| Resolution                                | ≤ 0.14 °  |
| Ambient temperature                       | -30...+70 °C  |
| <b>Operating voltage</b>                  | 10...30 VDC   |
| Isolation test voltage                    | ≤ 0.5 kV  |
| Short-circuit protection                  | yes   |
| Wire breakage/Reverse polarity protection | no/ yes   |
| Surge protection                          | -48...48VDC [U <sub>b,max</sub> ]   |
| Output function                           | 5-pin, Analog output  |
| Voltage output                            | 0.5...4.5V  |
| Output impedance                          | 99...105Ω   |
| Response time                             | 0.1 s   |
|   | time for the output signal to achieve 90% full scale if the angle changes from -60° to +60° |
| Current consumption                       | 50 mA   |
| <b>Design</b>                             | Rectangular, Q20L60   |
| Dimensions                                | 60 x 30 x 20 mm   |
| Housing material                          | Plastic, PC   |
| Electrical connection                     | Connector, M12 x 1  |
| Vibration resistance                      | 55 Hz (1 mm)  |
| Shock resistance                          | 30 g (11 ms)  |
| Protection class                          | IP68/IP69K  |
| MTTF                                      | 203 years acc. to SN 29500 (Ed. 99) 40 °C   |

**Inclinometer**  
**B2N60H-Q20L60-2LU4-H1151**

Mounting instructions/Description

Tilt angle



**Inclinometer**  
**B2N60H-Q20L60-2LU4-H1151**



**Accessories**

| Type code  | Ident-No. | Description   |  |
|------------|-----------|---|--|
| TX1-Q20L60 | 6967114   | Teach adapter for inductive encoders, linear position, angle, ultrasonic and capacitive sensors |  |
| SG-Q20L60  | 6901100   | Protective frame for Q20L60; protects against mechanical impact; stainless steel                |  |